

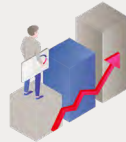
## Successfully migrate to Generis CARA

Regulated industries for which Generis CARA is mainly utilized often have very individual requirements for the processing of data. In this regard classic ETL tools usually don't meet the legal or industry-specific compliance guidelines. migration-center has been developed specifically for such use cases. With a scalable architecture for high data throughput, the possibility of delta migration to avoid downtime, and a sophisticated metadata transformation, migration-center also offers an audit-proof migration process when migrating to Generis CARA.



### Platform consolidation

migration-center supports a huge variety of different source platforms and most of their features. Together with a very flexible (metadata) transformation engine and the Generis CARA importer, it excels at migrating all content and metadata from several platforms into one CARA system in the right format. Object type definitions can be customized and fully mapped to fit into one single ECM with several applications. Source systems can be legacy ECMs, Microsoft SharePoint, file shares, and even databases.



### System upgrades

Pre-CARA5 systems are built on OpenText's Documentum with Oracle and other supported databases. Generis CARA5 is now built on ElasticSearch and no longer has these dependencies. Due to the architecture changes between CARA versions, an in-place upgrade is not possible when upgrading to CARA5. migration-center is used as a mechanism to perform the upgrade to CARA5, a migration to a new Generis CARA5 system. migration-center is also able to clean data as necessary as part of the upgrade migration.



### Cloud migrations

migration-center can be used to migrate data into the cloud, to reduce the operational and maintenance costs associated with an ECM. When migrating to CARA, data can be migrated to the CARA cloud offering, where Generis manages the cloud environment, or to your own managed cloud environment. The same migration-center functionality and connectors are used for these migrations, with additional cloud offerings leveraged as needed to expedite the migration process.

### Supported source systems

- ✓ File share
- ✓ SQL Database
- ✓ Hyland Alfresco
- ✓ HCL Domino/Notes
- ✓ IBM FileNet IS/CS
- ✓ Veeva Vault
- ✓ OpenText eDOCS/Content Suite (xECM)/ Documentum (D2/xCP)
- ✓ ... and many more!

### Our proven migration approach

Leveraging a migration strategy refined through extensive industry experience, migration-center emphasizes accuracy and efficiency in its six-step migration process. This approach is designed to be both scalable and flexible, allowing tasks to be executed either concurrently or independently. By performing most operations within its powerful database, migration-center enables early detection and correction of transformation or mapping errors before the actual import into the target system.

### Test migration-center now!

Request our 14-days valid free Trial Version and convince yourself of migration-center's broad feature set.  
[migration-center.com/free-evaluation-copy/](https://migration-center.com/free-evaluation-copy/)

