

## Successfully migrate to Hyland OnBase

When migrating to Hyland OnBase, migration-center can help you to initially fill or extend your applications from many different source systems using its out-of-the-box source connectors and the directory import process. The OnBase versions all the way up to 20.8.x are supported.



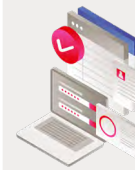
### Platform consolidation

migration-center supports a huge variety of different source platforms and most of their features. Together with a very flexible (metadata) transformation engine and the OnBase importer it excels at migrating all content and metadata from several platforms into one Hyland OnBase system in the right format. Object type definitions can be customized and fully mapped to fit into one single ECM with several applications. Source systems can be legacy ECMs, file shares, and even databases.



### Archiving

Archiving or decommissioning to Hyland OnBase can be done with migration-center in a very granular way. The content from different sources can be analyzed, classified, and moved to an archive application if attribute values, content types, or other information fit the defined criteria. Documents which shouldn't currently be archived can be migrated to other productive applications. Thus, the content can be split up and moved to separate locations.



### Rollout

migration-center can help to start from scratch with a new ECM. After deploying Hyland OnBase, the file share and other connectors can easily be used to fill the repository. It can also be used to analyze file shares or databases of legacy systems to check the documents' data quality and decide which documents to migrate. migration-center utilizes the DIP interface and produces the input documents with XML on the file share automatically. The XML can be designed as needed through the flexible built-in metadata and XSL transformation.

### Supported source systems

- ✓ File share
- ✓ SQL Database
- ✓ Hyland Alfresco
- ✓ HCL Domino/Notes
- ✓ IBM FileNet IS/CS
- ✓ Microsoft OneDrive/Outlook/SharePoint
- ✓ OpenText eDOCS/Content Suite (xECM)/ Documentum (D2/xCP)
- ✓ ... and many more!

### Our proven migration approach

In order to ensure efficiency and accuracy, migration-center follows a best-practice-based migration process consisting of six iterative steps. All steps can be performed independently and in parallel (fully scalable).

The beauty: they take place in migration-center's database allowing any transformation or mapping errors to be detected and corrected before the actual import.

### Test migration-center now!

Request our 14-days valid free Trial Version and convince yourself of migration-center's broad feature set.

[migration-center.com/free-evaluation-copy/](http://migration-center.com/free-evaluation-copy/)

