

# migration-center 4.0

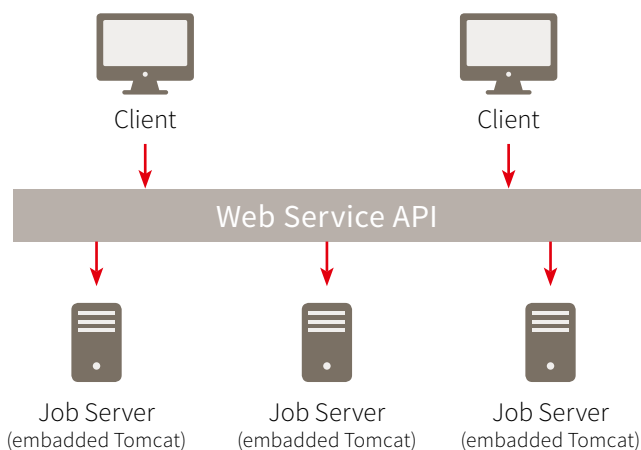
The next step in content migration technology

## Why migration-center 4.0?

migration-center 4.0 comes with a new and modern user interface, great new user experience and a lot of the latest functionality that will make your migration team even more productive. The motivation to develop a new major version of migration-center have been the architectural and technical constraints of version 3 that inhibited major improvements in the areas of usability, customization, performance, functionality, and custom jobs support (pre & post processing).

## New Technologies Used

The modernized migration-center job server's architecture will allow multi-threading in all connectors, easier connectors deployment, and the integration of any kind of custom connectors or jobs – so you can expect faster migrations and support for new use cases. The job server and the client will use state-of-the-art REST web services for communication instead of proprietary protocols, making it even easier to implement custom connectors or jobs.



Another major change in migration-center 4.0 is the client application. We have developed the new migration-center client from scratch, based on .NET technology. This leads to a state-of-the-art user interface with a much better user experience. And it allows us to keep the client up-to-date with new developments in the user interface design.

## Innovations & Improvements

Over the last years, our customers supplied us with a lot of valuable feedback. We have tried to integrate as many of those feature requests as possible in migration-center 4.0 in order to further streamline the overall migration process. The most important innovations and improvements to mention are multiple-value mapping lists, new transformation functions, custom processes, scheduler enhancements, and advanced folder creation.

### Multiple-value mapping lists

The flexible transformation engine is a main building block of migration-center. The new multiple-value mapping lists feature will allow storing several values under one key, reducing the effort to enrich existing metadata. A single mapping list can contain, for example, four values for each key:

Key	<Value 1>	<Value 2>	<Value 3>	<Value X>
fme	fme AG	ECM	Wolfenbütteler Straße 38	Other

The call to the function `mapValue(»fme«, 2)` would then result in »ECM«.

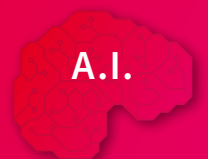
### New transformation functions

Often it is required to enrich the documents' metadata with data stored in external database tables. With the `getDataFromSQLTable` function we will address exactly this use case. For example, a call to `getDataFromSQLTable(»SAPTable«, 123, »Name«)` on the database table below would result in »Mike«.

SAP ID	Department	Name	Surname
123	Finance	Mike	Gration

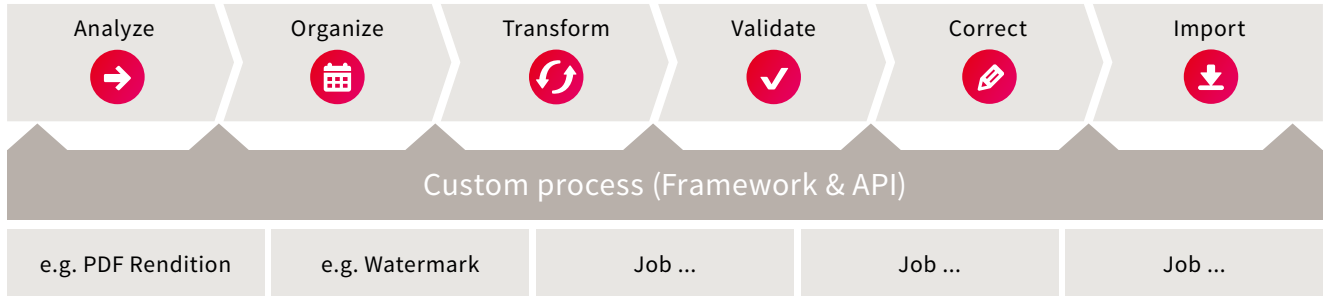
## Coming soon

Adding intelligence to certain migration processes is the next logical step we are working on for migration-center right as you read this. Using migration-center in the near future, Artificial Intelligence (A.I.) will be used in the content classification process. With A.I. repetitive learning and discovery through data will be automated and those progressive learning algorithms will turn your project into less of a challenge than ever before.



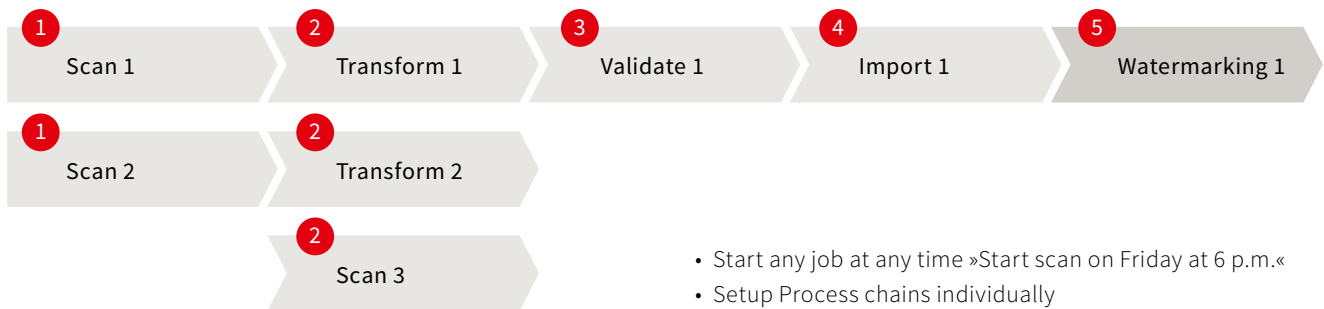
### Custom processes

migration-center has a built-in support for six common migration steps (see figure below). But with the new custom job feature, it will gain flexibility on an unprecedented scale. migration-center users will be able to enrich metadata and even content during the migration process by using custom jobs in any stage of the migration process. For example, one can use a custom job for watermarking, PDF transformation, data retrieval from third-party systems, deletion of objects in the source system after a successful import in the target system and many others. Build individual customer processes (jobs) without affecting the core of the product by using the out-of-the-box customer process framework.



### Scheduler enhancements

Also the new scheduler will be much more flexible than before and allow to start any job at any time and also to setup individual process chains for batch processing.



### Advanced folder creation

It is a common request in migration projects to migrate source documents into a new folder structure in the target system. The new advanced folder creation feature will give you all the flexibility you need to create a new folder structure with folder metadata in the target system that is based on any metadata from the source system.

